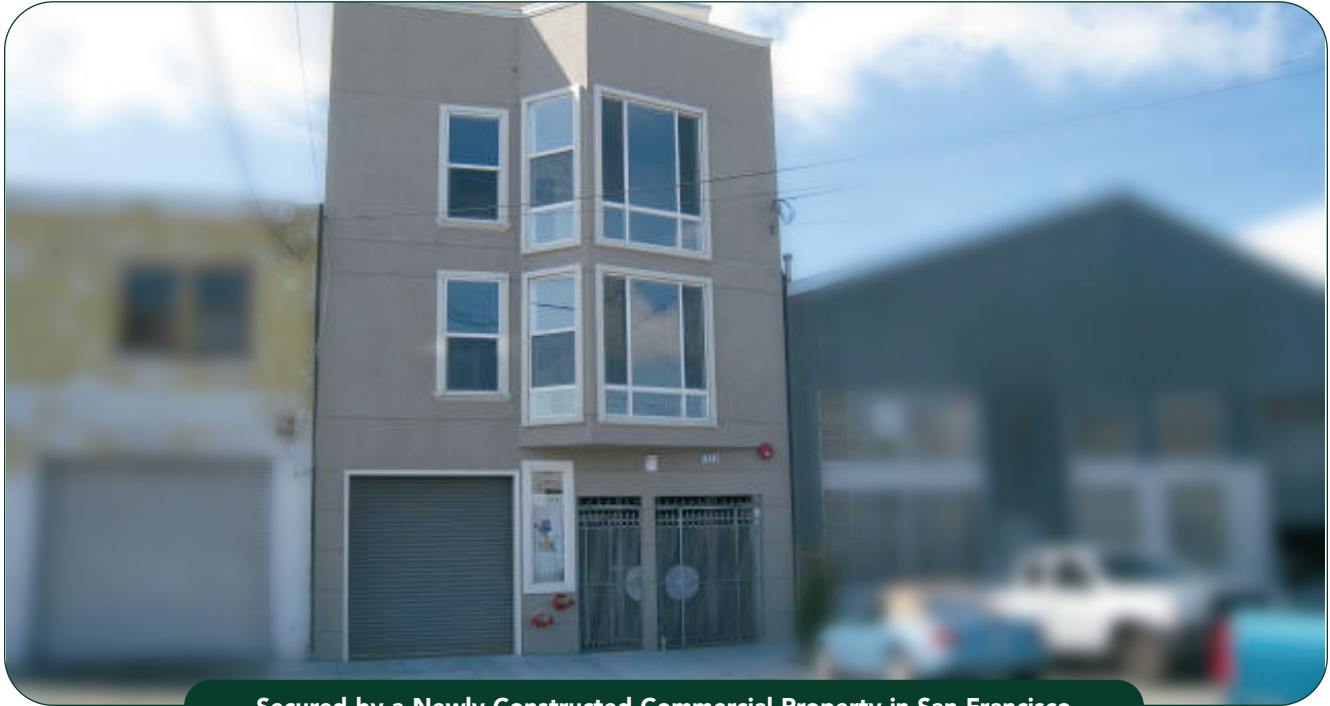


## Another Completed Private-Money Loan Investment



Secured by a Newly Constructed Commercial Property in San Francisco

**★ INVESTOR'S RATE OF RETURN:** 9.0% (one year guaranty of interest)

**Investment Type:** First Trust Deed

**Investment/Loan Amount:** \$750,000  
(Minimum Participation: \$75,000)

**Loan Term:** 3 Years

**Protective Equity:** \$1,250,000

**Loan-to-Value:** 37.5%

**Value:** \$2,000,000

**LOAN BACKGROUND:** This borrower just completed ground-up construction by using over \$1.1MM of his own money (on top of the cost of buying the land) on this commercial building and wanted to recoup some of his cash. Our loan affords him the ability to stabilize the income and eventually secure conventional financing. Our investors are delighted to receive a 9% rate of return on this well secured loan.

***More Investment Examples at [SequoiaMortgage.com](http://SequoiaMortgage.com)***